

GERMANY STUDY ABROAD 2016

Purdue GEARE • Spring/Summer 2016

Stop 1: München

Tuesday Jan. 4th - Thursday Jan. 7th



60 HOURS.

6 CASTLES.

2 HUMANS.

UNLIMITED BEER.



Must-See Experiences:

- [Not Winter] *Biergarten*, e.g. Biergarten Chinesischer Turm in Englischer Garten
The Beer Guide to Munich:
http://www.tripadvisor.com/Guide-g187309-k3261-Munich_Upper_Bavaria_Bavaria.html
- [Summer] Concerts, like at the Nymphenburg Palace
- [Summer] Nude sunbathing in Englischer Garten
- Weisswurst *Though I didn't find any. :(*
"You eat it with pretzels and beer -- nothing else. Weisswurst etiquette calls for you to remove the sausage from a bowl of hot water, cut it crosswise in half, dip the cut end in sweet mustard, then suck the sausage out of the casing in a single gesture. When you learn to do this properly, you will be a true Münchner."
- *Hirschgarten*, or "Deer Meadow", to relax, picnic, and escape hordes of tourists
- Explore trendy Haidhausen
Hippies and artists came here in the 1970s, making it "a hip place to be--especially for *Schickimickies* (Bavarian club-going yuppies), or one of the *Müeslis* (European granolas). The place to go is one of the bars or cafes around Pariser Platz or Weissenburger Platz. Take the S-Bahn to Ostbahnhof or Rosenheimerstrasse."
- *Botanischer Garten*
- Market Day at Viktualienmarkt
- Rafting Along the Isar River
"Begin at Höllriegelskreuth and follow the scenic path along the Isar's high bank. Your trail will carry you through the Römerschanze into what Münchners call the Valley of the Mills (*Mühltal*). After passing the Bridge Inn (*Brückenwirt*), you will eventually reach *Kloster Schäflarn*, where you'll find -- what else? -- a beer garden. After a mug, you'll be fortified to continue along signposted paths through the Isar River valley until you reach *Wolfrathausen*. Instead of walking back, you can board a raft made of logs and "drift" back to the city, enjoying beer and often the oompah sound of a brass band as you head toward Munich."
- Spend a night at Hofbräuhaus !!! *10/10 would recommend.*
A major tourist attraction, seating over 4,000 drinkers for a night served by Bavarian women in peasant dress. Upstairs is beautiful and traditionally styled, wood panelling, etc. Downstairs there's 2 sections, and that's key... One is quiet and one has a larger, more fun area (read: rowdy) where diners sit on long benches and toast with beer *steins* and listen to a live band in *lederhosen*.
- Deutsches Museum, one of the most important showcases of science & technology in the world
- *Frauenkirche*, a landmark church built between 1468-1488
- *Schlösser!*

We tried to do that, & maybe because it was a weekday, but the area seemed pretty dead. It was like 9 PM.

Read more:

<http://www.frommers.com/destinations/munich/763886#ixzz3oNtvuv5S>

http://www.tripadvisor.com/Guide-g187309-k3377-Munich_Upper_Bavaria_Bavaria.html

1



2



1. Neuschwanstein

near Füssen

2. Hohenschwangau Castle

near Füssen

3. Schloss Nymphenburg

Munich

4. Schloss Linderhof

near Oberammergau

5. Residenz

Munich

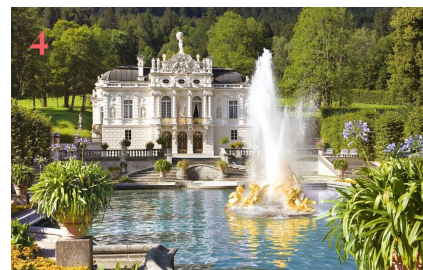
6. Neues Schloss

Chiemsee

3



4



5



6



München 4

- **Neuschwanstein**, near Füssen: When the creators of California's Disneyland needed an inspiration for their fairy-tale castle, this was their model. Neuschwanstein is the most lavishly romantic (and impractical) castle in the German-speaking world. A 19th-century theatrical set designer drew it up in a neofeudal style. The man who ordered its construction was (who else?) "Mad" King Ludwig II of Bavaria.
- **Hohenschwangau Castle**, near Füssen: It was completed in 1836 and built on the ruins of a 12th-century fortress. Its patron was the youthful prince regent, Maximilian II of Bavaria, who used it to indulge his taste for "troubadour Romanticism" and the life of the English country manor.
- **Schloss Nymphenburg**, Munich: It was originally conceived and constructed between 1664 and 1674 as an Italian-inspired summer home for Bavarian monarchs. Subsequent Bavarian kings added to its structure, and by around 1780, the building and lavish park bore a close resemblance to the French palace at Versailles. A highlight of the interior is the green, gold, and white banqueting hall, with frescoes and ornate stucco that are among the most memorable in Bavaria.
- **Schloss Linderhof**, near Oberammergau: This palace, built in the 1870s, was a teenage indulgence of Ludwig II. Its architects created a whimsically eclectic fantasy, inspired by Italian baroque architecture. In the surrounding park, Moorish pavilions and Mediterranean cascades appear against Alpine vistas in combinations that are both startling and charming.
- **Residenz**, Munich: The official residence of the Wittelsbach dynasty from 1385 to 1918, the Residenz is a grand royal palace. Of particular fascination is the Antiquarium built in 1569, the largest Renaissance ceremonial hall north of the Alps and the oldest surviving part of the palace. The Cuvilliés Theater is one of the finest rococo theaters in the world, and the treasure-trove that forms the Schatzkammer is one of the grandest in Germany.
- **Neues Schloss**, Chiemsee: Called "a monument to uncreative megalomania," this castle, begun in 1878 by Ludwig II, stands on the island of Herrenchiemsee, in the midst of Chiemsee, one of the most beautiful lakes in the Bavarian Alps. The chief attraction is its splendid Great Hall of Mirrors, the most authentic replica of the more famous hall at Versailles outside Paris. Ludwig was able to spend only 9 days in the palace. At his death, only 20 of the 70 rooms he envisioned had been completed.

Read more:

<http://www.frommers.com/destinations/munich/763889#ixzz3oNaGlgDj>

- Neuschwanstein, near Füssen: When the creators of California's Disneyland needed an inspiration for their new theme park, this was their model. Neuschwanstein is the most romantic (and impractical) castle in the German-speaking world. A 19th-century theatrical set designer drew it up in a neo-Gothic style. The man who ordered its construction was (who else?) "Mad" King Ludwig II of Bavaria.
- Lohenschwanau Castle, near Füssen: It was completed in 1836 and built on the ruins of a 12th-century fortress. Its patron was the youthful prince regent, Maximilian II of Bavaria, who used it to indulge his taste for "troubadour Romanticism" and the life of the English country manor.

I LOVED this fairy tale castle!!! Go here! The train might take a little long (it's for sure a day trip), but it's gorgeous to travel through the Bavarian countryside.

Beautifully elegant! Takes as much time as you wish, depending on how many sections of the Audio Guide you tune into!

It's in the same valley as Neuschwanstein. If you go to one, it's easy to go to both; the question is if you have time. (We didn't arrive early enough.) I think we would've needed an extra hour & a half, but you need to pay attention to when they stop giving tours... You can only get inside with a tour!

Also, there's a Museum of Bavarian Kings at the bottom of the valley, close to the guest houses (hotels) and the ticket shop.

• Schloss Linderhof, near Oberammergau: This palace, built in the 1870s, was a teenage indulgence of Ludwig II. Its architects created a whimsically eclectic fantasy, inspired by Italian baroque architecture. In the surrounding park, glistening pavilions and Mediterranean cascades appear against Alpine vistas in combinations that are both startling and charming.

• Residenz, Munich: The official residence of the Wittelsbach dynasty from 1385 to 1918, the Residenz is a grand royal palace. Of particular fascination is the Antiquarium built in 1569, the largest Renaissance ceremonial hall north of the Alps and the oldest surviving part of the palace. The Cuvilliés Theater is one of the finest rococo theaters in the world, and the treasure-trove that forms the Schatzkammer is one of the grandest in Germany.

• Herzog Anton Ulrich-Palais, Garmisch-Partenkirchen: Called "a monument to uncreative imagination," this castle, begun in 1878 by Ludwig II, stands on the island of Herchenriedl in the midst of Chiemsee, one of the most beautiful lakes in the Bavarian Alps. The chief attraction is its splendid Great Hall of the 18th century, an authentic replica of the more famous hall at Versailles. The emperor was able to spend only 9 days in the palace. At his death, only 20 of the 70 rooms he envisioned had been completed.

Read more:

<http://www.frommers.com/destinations/munich/763669#ixzz36NaG1dJ>

Schnellbahnnetz



Public Transportation:

- U-bahn (subway)
- S-bahn
- Strassenbahn (trams)
- Buses

1. The same tickets get you on any of these networks! Buy tickets at vending machines in S- or U-bahn stations, on trams, or from bus drivers.
2. **Validate** your ticket by putting it into the machine on S- or U-bahn platform, or in bus or tram. Valid for 2 hours.
3. Transfer as often as you like during the 2 hours, as long as it's in the same direction!

There's a small box on a pole where you stick the paper ticket into a slot. Not validating the ticket gets you a fine, just as not having a ticket would!

Tryna Save €€€?

- Tageskarte (day ticket) within the inner city costs 5.80€ for one adult. **Partner Tageskarte** costs 11€ and is good for up to 5 people traveling together.
- 3-Tageskarte (3-day ticket) costs 14€; the **partner 3-tageskarte**, good for up to 5 people traveling together, costs 25€.
- Taxi -- Cream-colored, plentiful, and expensive. Taxi fares begin at 3.30€ and rise by 1.60€ per kilometer. There's an additional 1.20€ charge to order a taxi by phone. Call **Taxizentrale** at tel. **089/21610** for a radio-dispatched taxi.
- **Bicycle** -- One of the most convenient places to rent a bike is **Radius Bikes** (tel. +49 089/543-487-7740; www.radius-tours.com), at the far end of the *Hauptbahnhof* at *Arnulfstrasse 2*. Cost: 3€ per hour, or 15-18€ per day. A deposit of 50€ or a credit card number is required; students receive a 10 percent discount. Radius Bikes is open mid-March through October Monday through Friday 9am to 6pm, and Saturday through Sunday 9am to 8pm.

Definitely was too cold and rainy for this in January, in my opinion. It was always dreary and cold like it had just rained!



What You Need to Know...

Business Hours

Banks M-F 8:30-13:00 & 14:30-16:00
Stores M-F 9:00-17:00 & Sat 9:00-14:00*

**langer Samstag* (1st Sat. of the month) 9:00-18:00

*Note: Jan. 6 is a public holiday (Epiphany)! *aka Turkish Döner places will be open, but not banks or grocery stores*

Time Zone

Munich is at Central European Time, or Greenwich Mean Time (GMT) +1:00.
Between April and September, the clocks are set forward by an hour: GMT +2:00.

EST + 6 hours

Safety

Munich is a big city. Beware of pickpockets, especially at public events, shows, etc., and of robberies at big tourists spots, especially at night. A United States Consulate is at Königstrasse 5, 80539 München (tel. +49 089/2-88-80). For emergency medical aid or police, call **110**. Germany's country code is +49.

Laundry

Look in the Yellow Pages for a coin-operated *Wascherei* or *Waschsalon*.

Toilette

"F" for *Frauen* & "H" for *Herren*. You're going to have to rely on pubs, cafes, or restaurants--but they don't always appreciate you if you're not a paying customer. Also, lots of bathrooms have attendants, and they will expect some coins as a tip--about 50c should suffice.

What You Need to Know... (cont'd)

Money

Munich is an expensive city (yay!), but most cities accept Visa and Mastercard, as well as American Express and Diners Club. *Before you get to Germany*, you're going to want to know how much your bank charges per international transaction, if there is a currency conversion rate, and your daily withdrawal limit at ATMs.

Currency Exchange is almost always a better rate at a bank than at a hotel.

BUT it is way better to not bring cash!! Stupid conversion fees are at any place, so just take cash out of an ATM once you're there!

Value-Added Tax, *Mehrwertsteuer*

Nearly everything is taxed at 19%. Food and books at 7%. VAT is included in the prices of restaurants, hotels, and most goods for sale, so what you see is what you pay. Stores that display a tax-free sticker will issue you a **Tax-Free Shopping Check** at the time of purchase. When leaving the country, have your check stamped by the German Customs Service as your proof of legal export. You can then get a cash refund at one of the Tax-Free Shopping Service offices in the major airports and many train stations, even at some of the bigger ferry terminals. Otherwise, you must send the checks to Tax-Free Shopping Service, Mengstrasse 19, 23552 Lübeck, Germany.

Tipping

*I never saw
this, actually...*

If a restaurant bill says *Bedienung*, the service charge has already been added. If not, add 10%. Bellhops get 1€ per bag, as does the doorman at your hotel, restaurant, or nightclub. Room-cleaning staff get small tips. Tip hairdressers & barbers 5-10%.

If you ask German students, though, they will hardly ever tip. In my understanding, it was more a matter of being brought up well that one will tip 10% at a sit-down restaurant.



What You Need to Know... (cont'd)

Weather

Travel Month: *January*

Average High: 36°F

Average Low: 24°F

Beware the snow & rain. Even with low average levels of precipitation, Munich travel sites warn that winter snowless days can become rainy.

Average Temperature

Years on Record: 20 

	ANNUAL	JAN	FEB	MAR	APR	MAY	JUN	JUL	AUG	SEP	OCT	NOV	DEC
F	47	30	32	40	45	54	59	64	63	57	48	38	33

Average High Temperature

Years on Record: 20 

	ANNUAL	JAN	FEB	MAR	APR	MAY	JUN	JUL	AUG	SEP	OCT	NOV	DEC
F	55	36	38	48	53	63	68	72	73	66	55	44	38

Average Low Temperature

Years on Record: 20 

	ANNUAL	JAN	FEB	MAR	APR	MAY	JUN	JUL	AUG	SEP	OCT	NOV	DEC
F	39	24	25	32	36	44	50	54	54	48	40	32	27

Average Precipitation

Years on Record: 142 

	ANNUAL	JAN	FEB	MAR	APR	MAY	JUN	JUL	AUG	SEP	OCT	NOV	DEC
in.	36.5	1.9	1.7	2.1	2.8	4	4.9	5	4.4	3.3	2.4	2.1	2



\$65 Per Night

very nice Room in the center of mu
Munich, Bavaria, Germany ★★★★★ (22)

Private room 2 Guests 2 Beds

Adelheid

Check In	Check Out	Guests	Per Night
01/06/2016	01/07/2016	2	\$65
		\$65 x 2 nights	\$129
		Cleaning fee	\$24
		Service fee	\$19
		Total	\$172

[Request to Book](#)

About this listing

Hallo! Ich vermiete ein sehr schönes ZL 15qm, in einer wunderbaren, stilvollen Altbauwohnung, mit Bad und Küchenmitbenutzung. Die Wohnung liegt direkt an der UBahnhof Silberhornstr, Bus und Tram. Supermärkte und Restaurants in 500 Metern Entfernung.

\$64 Per Night

Cozy 1room apart in dream location!
München, Germany ★★★★★ (1)

Entire home/apartment 2 Guests 0 Bedrooms 1 Bed

Isabel

Check In	Check Out	Guests	Per Night
01/06/2016	01/07/2016	2	\$64
		\$64 x 2 nights	\$127
		Cleaning fee	\$29
		Service fee	\$19
		Total	\$175

[Request to Book](#)

About this listing

The apartment is located right in the heart of Munich in a dream location, to To Oktoberfest less than 20 Minutes (10 Min Metro). Ideal for 2-3 Persons: one double bed and a couch for 1 additional Person.

[Contact Host](#)

\$59 Per Night

central-Leopoldstr.-balcony-bright
München, Bayern, Germany ★★★★★ (38)

Private room 2 Guests 1 Bed

Juan Carlos

Check In	Check Out	Guests	Per Night
01/06/2016	01/07/2016	2	\$59
		\$59 x 2 nights	\$117
		Service fee	\$14
		Total	\$131

[Instant Book](#)

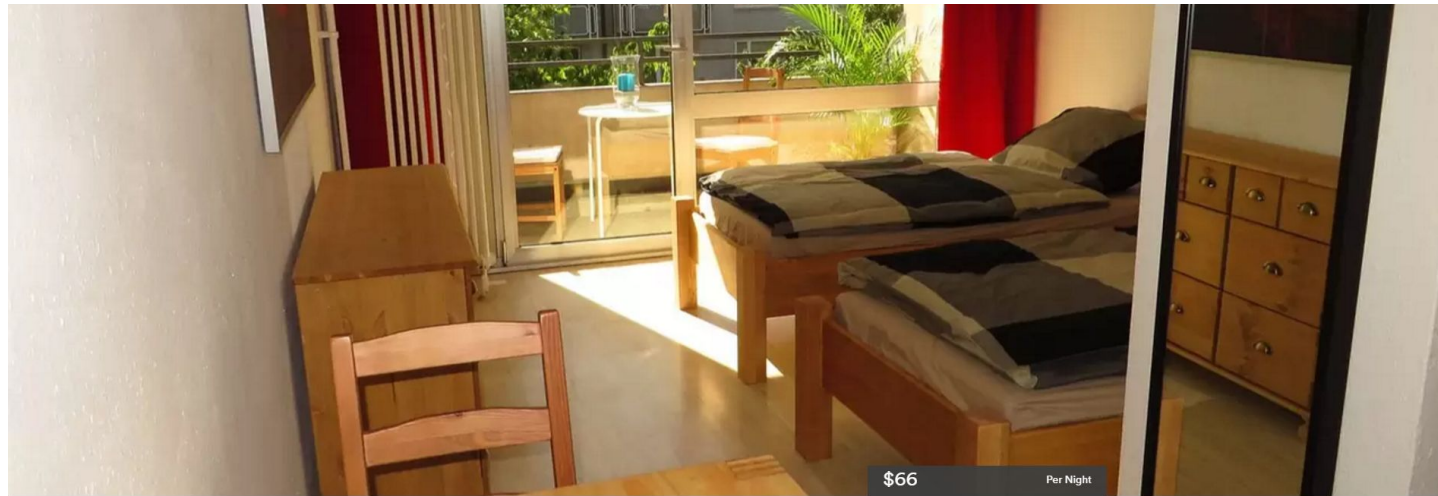
About this listing

- room 16m2 with balcony
- Internet WLAN
- connection to public transport – tramway, bus, underground
- various shops in close vicinity: supermarket, baker's shop, pharmacy

Nighttime?

München 10

Airbnb <https://www.airbnb.com/rooms/4368782>



Paulette

Near Downtown & Fair (Messe) Apt. 3

Munich, Bavaria, Germany ★★★★★ (66)



Entire home/apt



2 Guests



1 Bedroom



2 Beds

\$66

Per Night

Check In Check Out Guests

01/05/2016

01/08/2016

2

\$66 x 3 nights

\$197

Service fee

\$24

Total

\$221

Request to Book

About this listing

This cozy apartment is ideal for all of you visiting the Munich-fair, or this beautiful city. Tram in front of the building brings you to any train station. On the spacious balcony you can take your breakfast or just enjoy the sunshine

Includes:

- Kitchen
- Internet / WiFi
- TV
- Washer
- Dryer
- Essentials
- Supermarkets & Restaurants just around the corner
- S-Bahn & U-Bahn: 10 min walk
- *Complimentary beer!! :D*

Check-In 2:00PM

Check-Out 11:00AM

Cost: \$66/night

Duration: Tuesday Jan 5th

- Thursday Jan 7th

Total: \$146

Nighttime Lodging Choice

München 11

Probe Bahn Card 25 ("Trial Card") → costs 19 € & you keep it for 3 mos. w/ 25% discount on all Deutsche Bahn trains!

Caveat: You have to cancel it a minimum 6 weeks before it expires. (I think it's still valid though?)



Stop 1 ➞ Stop 2

Stop 1 ➔ Stop 2

Option A

Goal: Travel overnight, Thursday. Arrive in the morning in time for breakfast. Check in and spend the day getting situated.

10:15PM München Hbf
CNL 1246 towards Berlin-Lichtenberg
Deutsche Bahn AG
7 hrs 48 min (2 stops)

6:03 AM Braunschweig Hbf
6:09 AM Braunschweig Hbf
Omnibus 730 towards Wilhelmstraße
Braunschweiger Verkehrs-GmbH

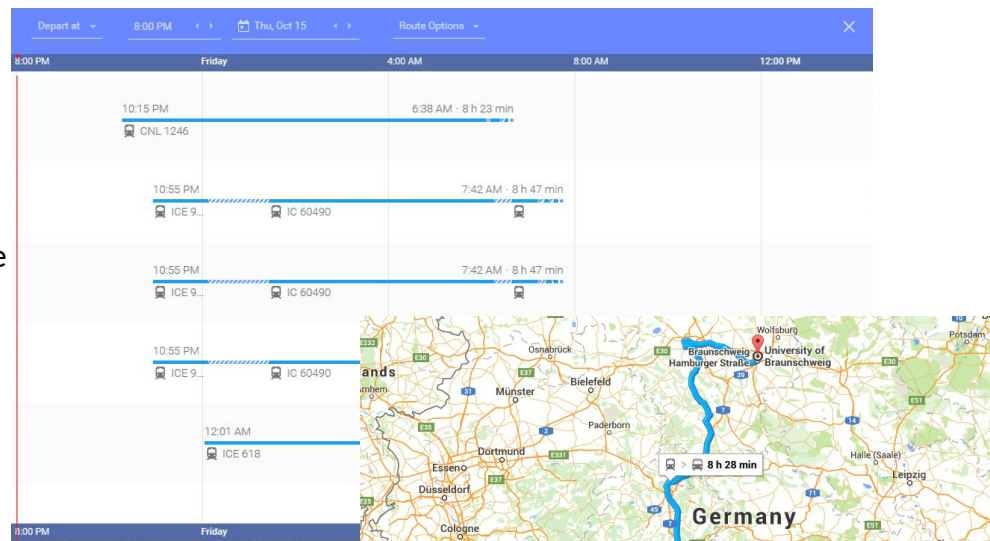
6:13 AM Wilhelmstraße
Walk
(about 1 min)

6:15 AM **Studentenwerk, Wilhelmstraße 1**

Leg timetable: Braunschweig Hauptbahnhof - Braunschweig Wilhelmstraße

Service number	730	730	730	730	730	730	730
Braunschweig Hauptbahnhof	22:10	06:07	06:22	07:02	07:07	07:12	08:00
Braunschweig J.-F.-Kennedy	22:13	06:10	06:25	07:05	07:10	07:15	08:03
Braunschweig Schloss	22:14	06:11	06:26	07:06	07:11	07:16	08:04
Braunschweig Wilhelmstraße	22:16	06:13	06:28	07:08	07:13	07:18	08:06

Price savings if you're willing to wait and leave later

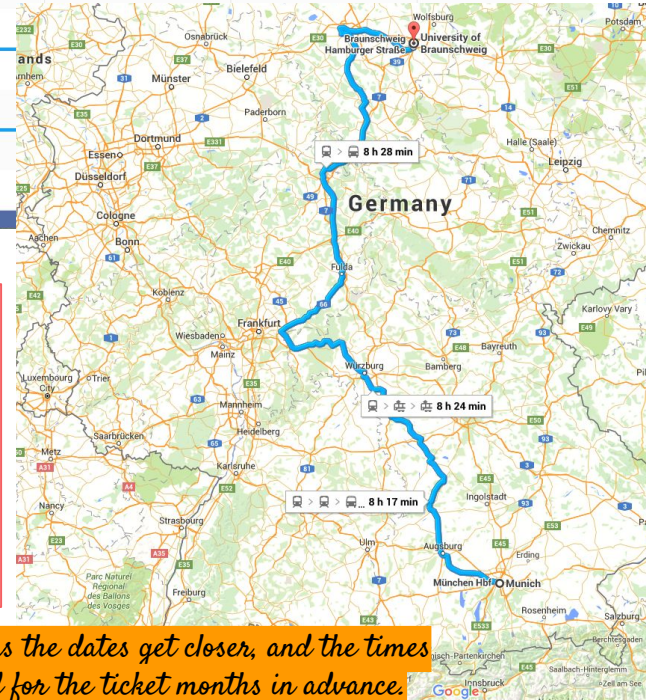


Cost

CNL: 71€
Bus: 5€*

76€

* Alternative: Tageskarte (2 persons) 6.70€.



Warning: Prices increase as the dates get closer, and the times may change if you looked for the ticket months in advance.

Adjust specific Braunschweig travel according to selected dorm.

Deutsche Bahn AG: <http://www.bahn.de/p/view/index.shtml>
Braunschweiger V-GmbH: <http://www.verkehr-bs.de/aktuelles.html>

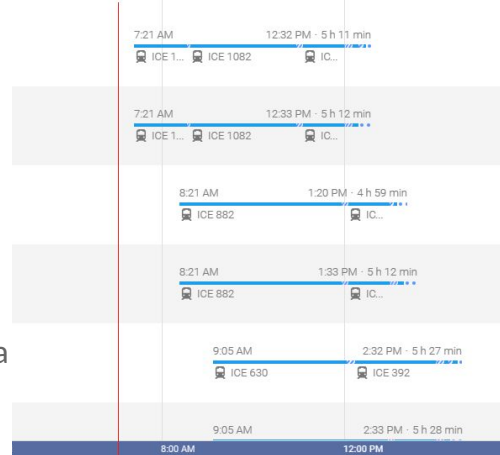
Stop 1 ➤ Stop 2

Option B

Goal: Travel early morning, Friday. Arrive in time for lunch. Check in and spend the day getting situated.

Note: Shops might close around 2PM?

- 6:41 AM München Hbf
ICE 1082/1132 towards Hamburg-Altona
Deutsche Bahn AG
1 hr 10 min (2 stops)
- 8:31 AM
- 8:35 AM Nürnberg Hbf
ICE ?? towards Hamburg-Altona
Deutsche Bahn AG
2 hr 19 min (4 stops)
- 10:54 AM
- 11:03 AM Göttingen
ICE 374 towards Berlin Hbf (tief)
Deutsche Bahn AG
54 min (2 stops)
- 11:57 AM Braunschweig Hbf



Leg timetable: Braunschweig Hauptbahnhof - Braunschweig

Service number	730	730	730	730
Braunschweig Hauptbahnhof	11:11	12:10	13:13	14:03
Braunschweig J.-F.-Kennedy	11:14	12:13	13:16	14:06
Braunschweig Schloss	11:15	12:14	13:17	14:07
Braunschweig Wilhelmstraße	11:17	12:16	13:19	14:09

- 12:10 PM Braunschweig Hbf
Omnibus 730 towards Wilhelmstraße
Braunschweiger Verkehrs-GmbH
- 12:16PM **Studentenwerk, Wilhelmstraße 1**

Adjust specific Braunschweig travel according to selected dorm.
I am glad we took the overnight train, but it did wind up taking longer than planned, & then we were exhausted... Actually, this probably is more ideal. Except for the price.



Cost

ICE: 89€
M1: 5€*

94€

*Alternative: Tageskarte (2 persons) 6.70 €.

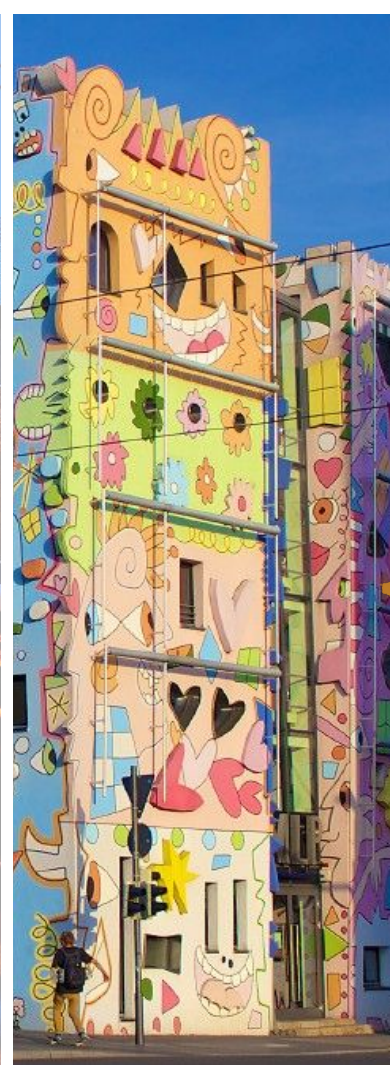
Stop 2: Braunschweig

Friday Jan. 8th - Tuesday Aug.
16th



“ANDERE LÄNDER,
ANDERE SITTEN.”





GERMANY
STUDY
ABROAD
2016

*This place is really close to
a great pizza place!*



What You Need to Know...

Staying Connected

Cell Phones: Talk to your provider at home about international plans (e.g. AT&T's Passport Plan), or just go to a German store to get a new plan/ SIM card. You can go to those semi-shady phone shops and even haggle over the price. Calls can be as low as 10¢ per minute, and incoming calls in Germany are cheaper, if not free.

Some phones, like a Galaxy, you can just remove the SIM card and put in a new one with a short international plan. For example, a new SIM card might be bought for 40€ with a plan for <100€ for the entire trip with unlimited data and enough talk and text.

If you have AT&T (with an iPhone, if not for all) but want an international SIM card, you'll have to get them to cancel your contract AND unlock your phone... The process can be annoying and take some time, so be warned. But the Passport Plan is shit.

iPhone: Without an international plan, just turn on Airplane Mode. You can also turn on WiFi while in airplane mode, so you get zero texts, use zero data, but all the free internet!

Vodafone: Basic plan is 10€/month, 750 MB data, and more texts/ calls than you'll use. ^{plenty!} <http://www.vodafone.de/>

Aldi Mobile: Germany call rate is \$0.10/min. You would get a Pay As You Go plan, but there's no available international roaming at this time.

<https://www.aldimobile.com...payg>

Other options: Email, Skype, What's App.

You'll need WhatsApp for all your cool new international friends. It's what they use.



What You Need to Know...

Residency Permit

Do this ASAP!! It can be very complicated because they make it that way. Also they might not speak English at the *Auslanders* office or be able to explain the forms very well in English. Your company's HR person would be a good person to help if you need it.

Step 1: Go to the office during any opening hours. Take a # on the 1st floor & wait. You give all the docs to one of the ladies behind a desk. This is the easy part. They just registered you with the city.

* Your Steuernummer (tax ID) will be mailed to you soon.

* Docs needed here? About the same as for the application, but you need the specific Registration Form, which is found on the first floor of the building and online.

Step 2: Next, apply for a Residency Permit. Students can only go Mondays and Wednesdays 9 AM to Noon. You can try emailing the ladies... But just go in, up to the second floor, and get another number from the machine upstairs. Tell them you're there to apply. Here's where you need the docs, cash money, and photo.

* Go early before 9 AM because you don't have an appointment and people line up at the doors!

* Bring your fancy new language skills or your nicest new German friend. A couple speak English, but even if they do, it's nicer to try and just admit it when you don't understand.

Step 3: Wait for letter in the mail. Use PIN from the letter to know when your card has arrived at that office. Return to office (during same M/W hours) to get your card.





Residency Permit cont'd...

Required Documents: *These may change from city to city.*

- Completed Form
https://formular-server.de/BS_FS/findform?shortname=Aufenthaltserlaubnis&formtecid=2&areashortname=BS
- Passport
- Cash for Fees (€100)
- Current Passport Photo or 2 Biometric Photos
OR you bring a copy of your Purdue scholarships, she tells you (something) in German, you get lucky, and you don't have to pay!! Woohoo!
- Copy of Certificate of Immatriculation and Letter of Acceptance
These are cheaply taken at any train station, or in the *Auslanderbehörde* lobby. It looks like a photo booth.
“Confirmation of Registration/ Proof of Enrollment at a university in which purpose of stay, duration of study, and field of study are apparent.”
The Immatriculation form is found on the TU's website. Ask the lady at the International Office.
- Copy Rental Contract (possibly for entire duration of trip/internship)
 - Rental Certificate (*Mietbescheinigung*)
https://formular-server.de/BS_FS/findform?shortname=Mietbescheinigung&formtecid=2&areashortname=BS
 - Alternatively, the Braunschweig Studentenwerk office will also give you a sufficient letter.
- Copy Health Insurance Coverage (necessary for entire duration of trip)
Bring a copy of the sheet from TK (or whichever insurance company your university uses) which you received during your meeting with them at the TU's International Office.
- Copy of Internship Info
 - Employer's Confirmation (*Arbeitgeberbestätigung*)
https://formular-server.de/BS_FS/findform?shortname=BestaetigungArbgeber&formtecid=2&areashortname=BS

You don't want to deal with them being confused about you working! Technically, with the GEARE partnership, you are doing student research, and not on a salary, it's voluntary, etc. Just leave it out of the conversation.

Reference:

http://www.braunschweig.de/politik_verwaltung/fb_institutionen/fachbereiche_referate/fb32/fb32_4/auslaender_eng/32_42_studenten_unterlagen_erteilung.html



Must-See Experiences:

- **Burgplatz (Castle Square)** *Braunschweiger Dom*
Duke Henry the Lion developed the Burgplatz area into a center of power in the 12th C. The medieval ground plan includes the castle, the cathedral, the Classicist Vieweg House, and the Lion of the Castle.
- Dankwarderode Castle
- St. Blasii Cathedral
- Ducal Museum & Quadriga, housing the city's library, archives, & cultural institute
- Altstadtmarkt, a location for trade for over 700 yrs & still home to the weekly farmers' market
- Magni Area, one of the oldest city quarters, with charming semi-timbered *Fachwerk* houses
- Schloss Richmond
- Oker Island & river boat rides
- Riddagshausen, with the Cistercian monastery, manor, & nature reserve
- Braunschweiger Mettwurst, a world-renowned classic sausage spread

Weather:

Average Temperature

Years on Record: 30 

	ANNUAL	JAN	FEB	MAR	APR	MAY	JUN	JUL	AUG	SEP	OCT	NOV	DEC
F	46	32	33	37	46	55	62	64	62	57	50	39	33

Average Precipitation

Years on Record: 62 

	ANNUAL	JAN	FEB	MAR	APR	MAY	JUN	JUL	AUG	SEP	OCT	NOV	DEC
in	27.7	1.8	1.8	1.9	2.2	2.4	3	3	2.8	2.1	2.5	2.2	2.1

Average Length of Day

Years on Record: 30 

	ANNUAL	JAN	FEB	MAR	APR	MAY	JUN	JUL	AUG	SEP	OCT	NOV	DEC
Hours	12.9	9	10.6	12.5	14.6	16.5	17.5	17	15.2	13.2	11.2	9.4	8.5

Nightlife & Youth Scene...

“Cult Quarter”

- The Friedrich Wilhelm Quarter
- Never went, but they claimed: from trendy bars to dancing, “something for all tastes”
- Tour: “Between Lessing and party mile”

Magni Area

- traditional old pubs
- live music
- Magniviertel
- Our favorite: Magnitor Wetscher

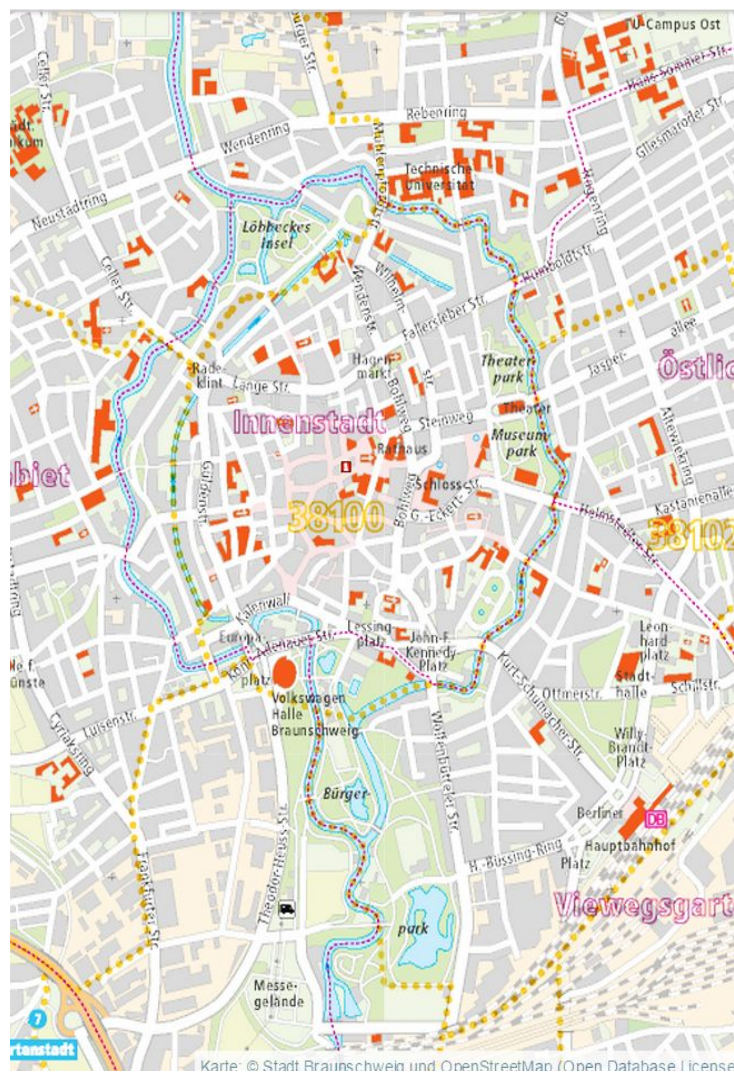
Pro Tip: Don't be afraid to try the Bananaweisen. Or buy a round of Pfefferminze Schnapps.



Tip: Watch your coat! Many Germans just put them anywhere in the club, and then they can get stolen (even accidentally).

- Bültengeweg “Pub Street”
- Eusebia Spielmann Straße 11, 38106 Braunschweig
(A casual bar by day or in the evening. Directly behind the Bibliothek. Try the Eis Cafe or Orange Dream on a hot day!!)
- Denk-Bar Guntherstraße 138, 38112 Braunschweig
- Studio Ost Kastanienallee 53, 38104 Braunschweig
- Fieber Sudstraße 18, 38100 Braunschweig
(Club with great music variety. Very popular.)
- Eule Around the corner from Fieber.
(“The place to be” on Thursday nights. Other nights it’s ringing with indistinguishable EDM-- or maybe that was just my ears. You might even play Mario Kart, too.)
- Brain Klub Wallstraße 21, Eingang Bruchtorwall, 38100 Braunschweig
(EDM club)





Public Transportation:

City Website:

<https://www.braunschweig.de/english/city/townmap/index.html>

City Bus Line: Braunschweiger Verkehrs-GmbH

<http://www.verkehr-bs.de/aktuelles.html>

Regional Bus Line: Regionalbus Braunschweig GmbH, by Deutsche Bahn

<http://www.rbb-bus.de/regiobusbs/view/index.shtml>

Railway: Deutsche Bahn AG

<http://www.bahn.de/p/view/index.shtml>

Taxi:

tel.0531 5991

0531 55555

0531 62121

“Call-a-Car”, Funkmietwagen:

0531 577777

0531 55050

0800 797900

Welcome Package to Braunschweig!

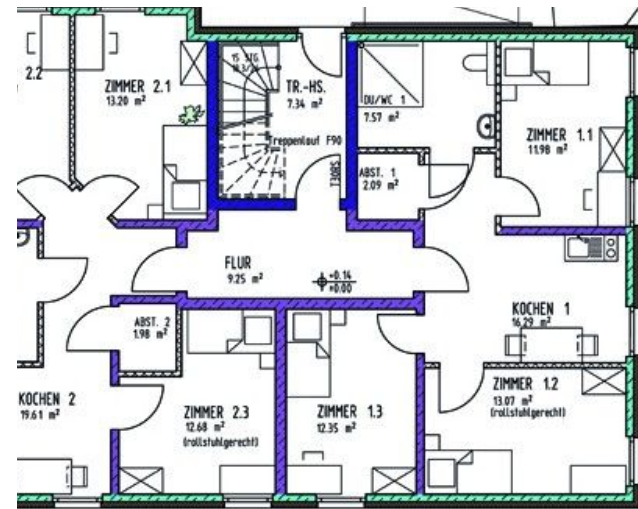
- go to customer center at Bohlweg 26
- voucher for a day ticket for up to 5 people
- and more...

The trams through the city are fantastic. The buses can sometimes not be relied upon... E.g. some scheduled times seem to not exist for bus drivers, and this is bad when you're trying to get to class!

Your Student ID gets you free public transit! AND it acts as a “Semester Ticket,” free transportation on DB trains throughout Niedersachsen.



Braunschweig 8



Studentenwerk

**See separate presentation for complete summary of dormitory options at T.U. Braunschweig.*

About Studentenwerk - Braunschweig

Contact them at servicebuero@stw-on.de

8 dormitories, from small houses to apartments to larger buildings which form student villages with hobby rooms, pub, and/or cinema.

Semester contracts last as long as agreed “run time”. End of term is Feb. 28/Aug. 31 [*This depends on the university’s semester timeline, I think that’s the right one.*]

Most contracts include electricity, gas, heating, trash disposal, water, furnishings, and even household insurance. So your bill is a “flat,” “no surprise,” “all-inclusive” charge!

<http://www.stw-on.de/en/braunschweig/wohnen/wohnheime>

About Studentenwerk - Braunschweig

Which forms of housing are offered?

- Rooms (mostly with wash basin) in larger units with **shared kitchens and bathrooms**
- Rooms in **shared flats** for 2 to 7 persons with shared kitchen and bathroom (partially second/separate toilet)
- Apartments with pantry kitchen and bath/shower and WC **The American-normal apartment way. Expect this in APM Rebenring.**
- Doublets (2 rooms) with pantry kitchen and bath/shower and WC (ideal for friends/couples)

What equipment can be expected?

Please have a look at the description on information leaflets and the according dormitory pages in the internet.

The rooms are often furnished, and there are rooms with washing machines / dryers as well as phone lines and cable / satellite connection. There are mostly common/party rooms and bike cellars. An **internet** connection is only available at those dormitories where it is explicitly mentioned, and the connection was ok but sometimes to worst, *and you still have to buy a router to connect via WiFi*. I recommend buying an ethernet cable as well for your laptop.

What is the equipment of furnished rooms?

As a rule, there is a bed, a cupboard, a chair and a shelf. If your room has a kitchenette, that means a *small* fridge, cabinets, and maybe a microwave. Some larger (e.g. 5-person) apartments have an oven but no microwave, plus a kitchen table where smaller apartments (e.g. 2-person) had no kitchen table... or common area at all.

Go immediately to **IKEA!** It's very close on the tram, about 20 minutes, they have everything, and everything is cheap. You need pots, plates, spatulas, kitchen knives, pillows, blankets... everything.

APM am Rebenring

Für ein Einzelzimmer / 2er WG Typ 13, Innenhof
Rebenring 63, 38106 Braunschweig

Mietbeginn: 04.01.2016

Mietende: 31.07.2016

Der monatliche Mietzins setzt sich zusammen aus

Mietfestwert	252,00 €
Betriebskostenpauschale	<u>131,00 €</u>
Gesamtbetrag	383,00 €

Kaution	400,00 €
Endreinigung	50,00 €

For a single room / 2er WG Type 13, Innerside.

The monthly rent is altogether: 383 €. Additionally, there is a one-time fee at the beginning: Deposit 400 € plus cleaning 50 €. You get this back in cash at the end and feel totally rich.

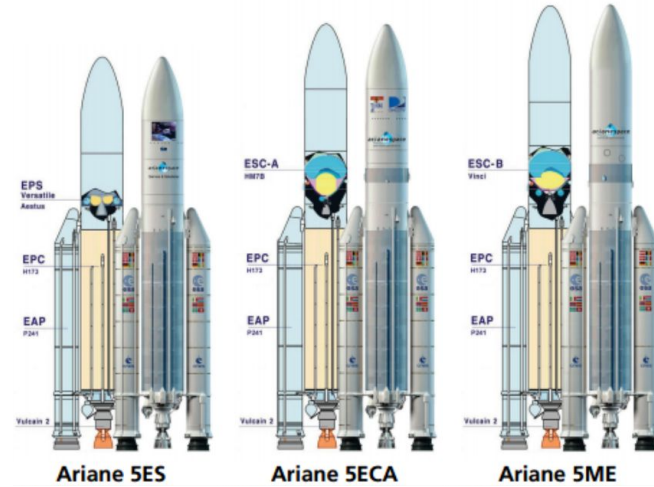
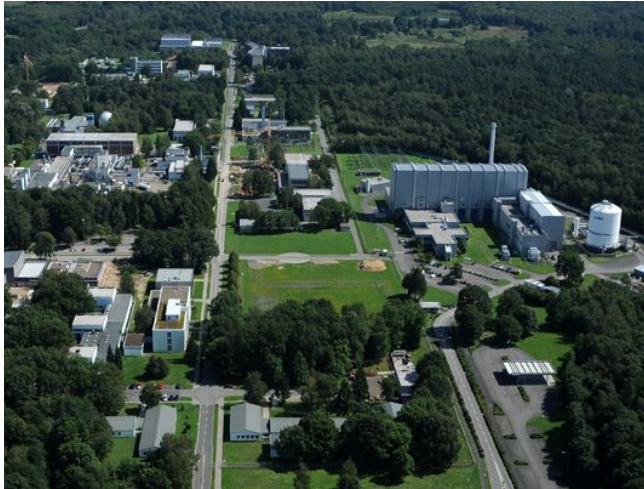
There are various buildings, 61-64. They were under construction during Spring-Summer 2016, but that meant that the inside of the apartments had all been completely redone. We were told we were the first to live in them since the renovation. They were the classic modern-efficient style, nothing special.

Moving in...

- Nearest airport: **Hannover**
- Studentenwerk OstNiedersachsen:
 - **Mo, Di, Do:** 9.30 – 12.30 Uhr, 13.30 – 15.00 Uhr. **Fr:** 9.30 – 12.30 Uhr
 - Mittwochs findet keine Sprechzeit statt. (They're closed on **Wednesdays**.)
 - If you arrive on the weekend, you will have to find temporary housing.
 - Rufen Sie an: **(0531) 391 - 4828**
 - E-Mail: servicebuero@stw-on.de
 - Address: **Studentisches Wohnen | Wilhelmstraße 1 | 38100 Braunschweig**
[Get off the tram at "Rathaus", the city-center stop, and it's a 2 minute walk.]
- Meeting with the Studentenwerk:
 - Make a date with service assistant directly.
 - Assistant will be able to hand the room over to you and help you fill out a move-in form (initial inventory/ assessment of apartment).
 - To extend your rental contract, contact the management *in good time* (i.e. a month in advance). *They will not shorten the contract.*
 - Rent and deposit is paid in person in cash (unless you pay a small % fine with a card) to the office above near city center. After that, you can set up an automatic transfer with your German bank account.

Moving out...

- At least two weeks prior, contact service assistant to set up an appointment to fill out forms and have your apartment checked at the end of rental term.
- The assistant will come check that it the room is totally clean (aka swept, wiped down, etc.) and that all your stuff is gone. At this time you return your keys.
- Your deposit will be transferred to your specified bank account *eight weeks* after your last rent payment, *at the earliest*. (But actually, if you go in with the move-out form, they will give you cash immediately.)



Deutsches Zentrum für Luft- und Raumfahrt

What You Need to Know...

Forschung:

1. Aeronautics, *Luftfahrt*
2. Transport, *Verkehr*
3. Space, *Raumfahrt*
4. Energy, *Energie*

Bekanntere Innovationen:

- 1908: 1st wind tunnel commissioned by the 1st DLR precursor, Aerodynamic Model Testing Institute (Modellversuchsanstalt für Aerodynamik; MVA), headed by Ludwig Prandtl, the father of aerodynamics.
- TerraSAR-X, a German Earth-observation satellite, launched in 2007 with a radar sensor operating in the X band with many modes of operation and capable of producing high-resolution and elevation profiles.
- The Columbus laboratory, Europe's key contribution to the ISS and launched in 2008, is controlled out of Copenhagen.
- High Resolution Stereo Camera (HRSC) on the ESA's Mars Express spacecraft.
- Mars500 brought opportunities for long-term biomedical studies, one of which was a 205 day study controlling the *salt* intake/outtake for its effect on man's biorhythm.
- The Rosetta Lander, Philae, based at the Lander Control Center (LCC) in Köln, which succeeded in the 1st comet rendezvous and landing (2015). [Read more about Rosetta.](#)

Johann Dietrich-Wörner

DLR Chairman of the Executive Board (*Vorstandsvorsitzender*) [2002-2007]

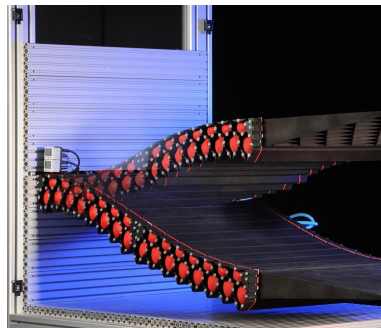
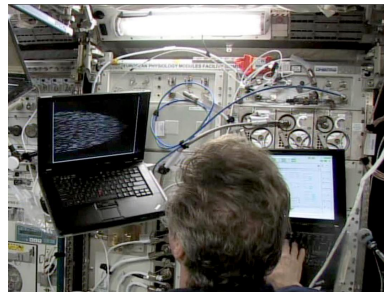
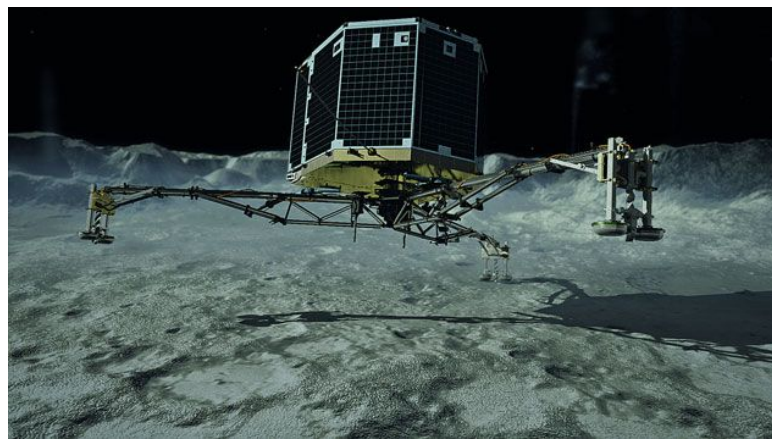
ESA Director General [2015-Present]

"It takes intense human curiosity and passion to achieve the most significant breakthroughs. It is they who devise such precisely defined yet broadly promising scientific and technical projects."

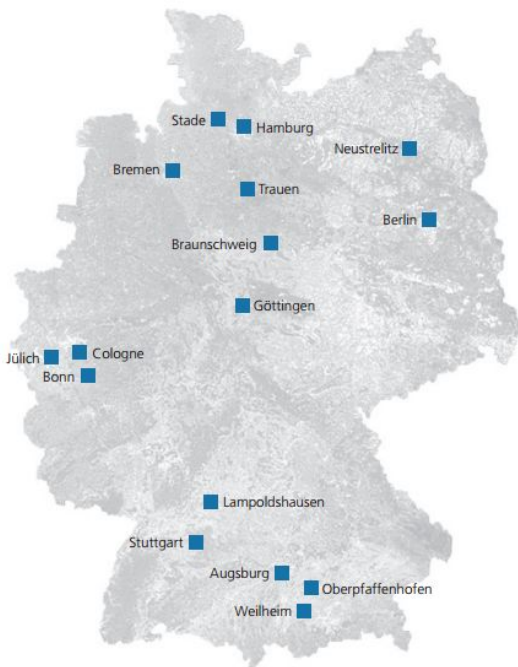
Eine sehr gute Referenz

http://www.dlr.de/dlr/en/Portaldata/1/Resources/documents/2012_1/The_DLR_GB.pdf

Braunschweig 14



DLR sites



At DLR **Berlin**, founded in 1992, research activities focus on space and transport. The DLR site in Berlin has made a name for itself, primarily through its involvement in important planetary research missions. Its scientists are involved in the planning, preparation and execution of space missions, as well as in the evaluation of the scientific results. The DLR Project Management Agency also has an office at the Berlin site.

The national ground segment is based at the **Neustrelitz** site – this is the satellite reception facility in Germany for payload data from remote sensing and small scientific satellites. The DLR site, located in the Mecklenburg-Vorpommern region, also performs tasks associated with satellite-assisted Earth observation.

Research work at the DLR facility located in **Trauen** focuses on rocket and aircraft propulsion. The scientists design tests associated with propulsion, acoustics, structural mechanics and design/aerodynamics, and carry these out.

At the **Hamburg** site, research is conducted in the field of aeronautics. Focal points include aviation and space psychology and research in the area of air transport concepts. This location is also reputed for the aptitude testing of pilots, air traffic controllers and astronauts.

The employees at the **Bremen** site, established in 2007, focus on research into space systems and the development of innovative space mission concepts and space-assisted applications for scientific, commercial and security-related purposes.

At the locations in **Göttingen** and **Braunschweig**, DLR focuses its activities in the fields of aviation and transport. At the research airport in Braunschweig, DLR is upholding its tradition of aeronautics research, which goes back to the year 1936. In Göttingen, DLR scientists concentrate on conducting basic and application-oriented aeronautics research. For experimental investigations, DLR can call on its efficient range of mobile and flight-testing vehicles, and on its flight simulators and air traffic simulation facilities. In addition, as part of a European network known as the German-Dutch Wind Tunnels, DNW, DLR operates wind tunnels, mobile rotor blade test stands and test benches for research into materials and noise emissions. At its fully certified railway laboratory, RailSite, DLR in Braunschweig offers the expertise to guide industrial partners through the official acceptance process for system components. On a joint basis with the French aerospace research facility ONERA, DLR Göttingen operates Europe's largest mobile ground vibration test facility.

Cologne hosts DLR's Headquarters and the offices of the Executive Board. As the interface between research and industry, DLR Technology Marketing is also based here, as is Quality & Product Assurance. In Cologne, research is conducted across the spectrum of DLR research fields. For this, a range of large-scale test facilities such as wind tunnels, engine and material test benches and a high-flux solar furnace are available. The European Transonic Wind Tunnel, ETW, is located in the immediate vicinity. The European Astronaut Centre, EAC, is located within the Cologne site. Parts of the Project Management Agency are also based here.

The DLR Space Administration is based in **Bonn**. On behalf of the German government, German space activities are planned and implemented here. Various Federal Ministry of Education and Research (Bundesministerium für Bildung und Forschung; BMBF) offices and the largest section of Project Management is also based at the DLR site in Bonn.

One of DLR's key activities in **Lampoldshausen** is the planning, building and operation of large-scale test facilities for space propulsion systems on behalf of ESA and the European industry. This is where development, qualification and acceptance tests are conducted on propulsion units, unique in Europe, as part of the Ariane programme, with particular emphasis on high-altitude simulations for upper-stage propulsion units.

At the **Stuttgart** site, research is conducted in all of DLR's subject areas, but particularly in energy and transport. This work is supported by a wide range of large research facilities such as combustion chamber test stands and roller test rigs for motor vehicles, plasma spray plants and test benches for material trials and research into lasers. This site is also characterised by its proximity to the University of Stuttgart-Vaihingen. With the initiative DLR@UniST, DLR increases its collaboration with the University.

Focal points at the site in **Oberpfaffenhofen** include DLR's involvement in space missions, atmosphere and climate research, navigation systems and robot technology. The German Space Operations Centre, GSOC, and the European Galileo project are also run from Oberpfaffenhofen. With the Earth Observation Center, EOC, the DLR site in Oberpfaffenhofen constitutes the centre for excellence in Earth observation in Europe.

The ground station established at the **Weilheim** site in 1968 is the link between Earth and satellites. During a satellite overpass, it establishes communication links with the satellite that allow the simultaneous two-way transmission of data. The antenna complexes can be operated independently of one another, enabling several space missions to be supported simultaneously.

There are three new DLR locations as of 2011; in **Augsburg**, work focuses on production technology while **Jülich** is home to the Jülich solar power tower, STJ, and **Stade** is home to the Center for Lightweight-Production-Technology.

What You Need to Know... (cont'd)

Location:

Lilienthalplatz 7
38108 Braunschweig
Tel.: +49 531 295-0

http://www.dlr.de/dlr/de/desktopdefault.aspx/tabid-10254/305_read-228/#/gallery/13861

Suggested Work Clothes:

Engineering offices, especially research centers, are rather laid back. All the students wore jeans or slacks, polos or sweatshirts, etc. Women are welcome to wear skirts or dresses at a conservative length, but don't worry at all about bringing fancier outfits. We made the mistake of wasting space with nice blouses or dress shirts and ties. In general, though, the styles are more conservative with muted colors, but that's an observation rather than a rule.

Required Work Materials:

None.

Germany & Environmental Issues

The German government takes environmental issues very seriously, and the Green party has recently become part of the ruling party. They have taken great steps in promoting energy efficiency and renewable energy, developing alternative fuels, and phasing out nuclear power. They also lead Europe in solar and wind generating capacity.

However, coal-burning emissions in Germany have contributed to air pollution and acid rain, which is damaging forests. Raw sewage and industrial wastes have also polluted the Baltic Sea and some rivers in Eastern Germany.

Braunschweig 16





What You Need to Know... (cont'd)

Getting Social?

Gift-giving at work is not common. Visitors to homes, however, often bring a small, good quality, but not expensive gift. Examples: flowers, wine, chocolates, or small gift that represents your own region.

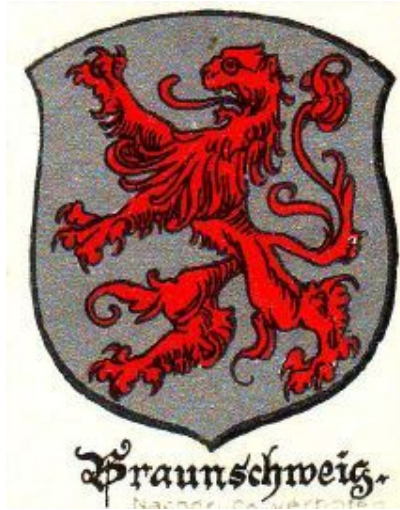
Miscellaneous

Germans are well-known for their planning and structure. Careful planning, in business and personal life, is highly regarded. Pay attention to your workplace's rules, structure, and general project procedures. Treat your colleagues and superiors at work with respect, in manner and in the language.

Language

Everyone at work spoke English with us from the get-go. The DLR is very used to having students from around the world come to do research, especially because the German university system requires a Bachelor's thesis, so students are always around. We often found that older colleagues were happy to be able to practice their English or even ask us to correct them. However, really do try to make the effort to speak German. It's more than just a nice gesture, and it's obviously polite. Don't worry about how you sound! Just speak! You're in Germany for a reason, right? Immerse yourself.

Disclaimer: This picture represents none of the suggested social habits, networking activities, or business etiquette. This picture is a joke.



Technische Universität Braunschweig

**See separate presentation for complete summary of dormitory options at T.U. Braunschweig.*



What You Need to Know...

Winter Semester 2015-2016:

Lecture Period 26 October to 13 February

You won't register for classes, just the exam. Find out lecture times on the website.

Summer Semester 2015:

4 April to 16 July

Summer Holidays:

Excursion week: Sunday, 15 May 2015 to Sunday, 22 May 2015

Public holiday in Niedersachsen (Lower Saxony):

- 25 March 2016: Good Friday
- 28 March 2016: Easter Monday
- 1 May 2016: Labour Day
- 5 May 2016: Ascension Day
- 16 May 2016: Whit Monday

Make sure to actively ask around about when to register for exams! I think it was supposed to be a month or more before the exam, but literally no one told us...

Appropriate Dress:

Germany is a very casual, free environment. There is no dress code, and youth are encouraged to express their personality. However, there is mention of the inappropriateness of men wearing tracksuits to class. On that note, there weren't many girls wearing leggings and oversized t-shirts, either. The casual trend extends into "what to wear" to most nightclubs or house parties.

Exams

The summer exam period is after the end of semester in mid-July until early August (after this, exams are for students who failed it the previous year). Make an effort to find out your exam time ASAP, so that you can reschedule it if necessary. Written exams for engineering will probably be analytical problems/ calculations, like in the U.S., or maybe have a drawing section for a design-type course. Also, oral exams play a big role at many universities, and rescheduled exams have a higher possibility of being oral.



What You Need to Know...

TUB's "Preparing for Your Stay"

- Always be practicing your German language skills!
 - German aptitude testing is not required for TUB admission, and there's a promise that at least some components of classes will be in English.
 - TUB German language classes during the semester are available, of course. Additionally, check out the VHS for more classes offered by the city!
- Visa / Residency Permit
 - Visas are not required for citizens of USA, Canada, and some other countries (find a full list on TUB's website).
 - A Residency Permit will be needed for stays longer than 90 days. Also, your internship company will want it for legal paperwork.
 - Get paperwork from the International Office when you arrive (there should be an orientation meeting): Immatriculation form, insurance, etc.
 - Register ASAP with the City of Braunschweig.

[see previous slides for more info]
- Health Insurance
 - Required for enrollment at TUB, because they've had problems with foreign health insurance in the past.
 - 80 € per month
 - Foreign plan? "Only a German statutory health insurance provider can verify and confirm whether your plan does comply with German standard." You can present your Purdue documents to an office and see if they approve that instead of TUB's recommended plan.
 - *Travel insurance does not count.*
 - ALSO a Personal Liability Insurance: check if you already have international coverage, which you can have approved in Braunschweig, or else take TUB coverage for 7 € per month.

<https://www.tu-braunschweig.de/...exchange/preparation>



What You Need to Know...

Past AAE Courses Approved at TUB:

(2016)

Control Theory--Basics = AAE 364 Controls

Measurement Methods in Fluid Mechanics LAB = AAE 33401 (lab elective)

Aircraft Engine Thermodynamics = AAE 338 (prop prereq. for AAE 439 Rocket Prop)

Aerodynamics of (Jet) Engine Components = AAE 438

Components of Jet Engines--Design, Operation, Maintenance = AAE 490000 (prop elective)

Thermal Turbomachinery = AAE 490 (prop elective)

Vibroacoustics = (aerodyn elective)

(2013)

Cyclic Processes of Airplane Engines = AAE 49000 (prop)

Automobile Aerodynamics = AAE 49000 (aerodyn)

Microfluidic Systems = AAE 49000 (aerodyn)

Flight in Disturbed Atmosphere = AAE 49000 (aerodyn)

(2012)

Thermodynamic Cycles of Aircraft Engines = AAE 49000 (prop)

Heat and Mass Transfer = AAE 49000 (prop)

Keep in mind that the list of courses offered in English (at least partially) changes every year and every semester. Each needs to be approved by Purdue faculty, e.g. Dr. William Anderson and your AAE advisor. Use these as a guide for what has been approved in the past, and how to possibly arrange your plan of study in preparation for this. *AAE 334 Aerodynamics is a Purdue class that most likely will not have a German counterpart, or else the Purdue staff almost never approved the available options.*

Purdue's contact @ TUB: **Prof. Rolf Radespiel** [r.radespiel@tu-bs.de]

Prof. Radespiel both teaches courses in English for international students like us with interest, and has a number of important connections in industry--helpful for finding internships!

What You Need to Know...

Activities at TUB:

German Buddy Program:

The International Office aims to put you in contact with a German student while you're there. Fill out an online form to be assigned a "buddy".

<http://www.international.tu-braunschweig.de/survey/index.php/23837/lang-en>

Speaking Partner:

You'll see emails or flyers about getting a speaking partner, and this is something you should definitely consider! You have to go to the first night, where there will likely be a whole bunch of German or other students wishing to find someone to practice their English with. Don't worry, partners choose each other. Partners typically meet once a week and split the time between the two languages, but it's very informal, and you can decide your own schedule.

International Exchange Erasmus Student Network (ESN):

They put on a ton of fun events, like a tour of the Jägermeister factory.

<https://www.facebook.com/groups/isnbs2016/>

<https://www.facebook.com/groups/isnbs/?ref=bookmarks>



Staatstheater

There is a 50% discount for students, plus in the TUB welcome package, they give you one free ticket as a "Welcome to Braunschweig!" So find that paper, look up the schedule, and go take advantage of the offer!! They have a ton of different events, including plays, musicals, symphonies, dance performances, international movie showings, and cultural discussions.

<http://staatstheater-braunschweig.de/startseite/>





An Honest but Friendly Warning...

TU-Braunschweig was not like most Study Abroad programs as you might be led to believe.

You need to be proactive, of course, about arranging your AAE Plan of Study to include what classes you can at TUB, which may for example involve taking Major/Minor electives in Germany and postponing AAE 334 until the following semester, as we did. But that's not really a problem, and you can stay on track without adding a semester to your graduation date—yay!

But:

These TUB Aerospace courses are going to require work. First of all, (sit down for this) you will show up the first day and the class will not be in English, because they're all in German. And the books are in German. Remember I keep saying to be practicing your German skills? Hello, yea.

Now you might say, "But the TUB 'English Lectures' Excel sheet says this class is 'Willing to be Offered in English: Yes.'" Well... Unfortunately that's not completely true. All undergraduate classes at TUB are offered in English only, they will not make a new lecture time for you, and there may be a slim chance that the professor might offer to teach a Masters-level lecture/lab in And, just to throw it in there with the bad news: the exams are "legally only allowed to be offered in German."

There is good news, though!! We're not fluent in die deutsche Sprache, so there has to be, right?

The good news is that the university will work with you to help you be successful. The Research Assistants (i.e. TAs) for each course agreed to tutor us for an hour each week—give or take, as needed. They were willing to look up questions if they couldn't answer right away and get back to us. They translated notes, as best they could, when we questioned technical terms. One fabulous TA also sat in on a professor's lecture to make note of any important anecdotal stories. One generous professor (from the Fluid Mechanics lab) essentially retaught his entire lecture in English for the two of us who sat in his office. The weekly sessions were super helpful.

Caveat: you can't pass a class by attending an hour tutoring session. We also spent many, many hours translating notes. We translated slides, books, lab procedures... The three of us split up the work, and sometimes we even attended class! It was always so important to keep up with the material and be prepared for each week. By the end, it was getting easier to follow the professors, and I felt proud of that. Your technical vocabulary will be great.

An Honest but Friendly Warning... (cont'd)

Going forward...

1. *Don't be discouraged, now that I've told you the truth.*
2. *Do shoulder the responsibility, and accept that this semester will require some man hours.*
3. *Remember to encourage each other to stay on track, and please please try not to procrastinate, because then your life will suck.*

There's other basic study tips, of course... Like, make sure you are processing and not just translating. Also, it's always better doing things together, and you can always find ways to make even Mondays fun. Take your laptops to the park by the Gauss statue, for instance, and bring along the 2€ one-time-use BBQ set.

Honestly, this experience was beyond worth it. I can't count the number of times this semester I've begun a sentence with, "Oh while I was in Germany, actually..."

*From living very independently (totally adult, go us!), to the millions of travel memories, to the close friendships you'll foster with the other Purdue students (basically your whole life with them, even if you hate them sometimes, it's fine)... To just sitting at a table beside a cobblestone street, drinking a beer brewed right inside, next to a guy from northern Germany and from Italy (but he's getting his Ph.D in England) and from Poland and from Purdue, talking about aerospace and how we all were hooked on it in similar ways, and realizing that when else are you going to have a conversation like this? When else are you going to have an experience like this? No f***ing way would I rather be sitting in the cornfields right now!!*


So good luck! Have a blast! Spend all your money on travel—and I highly recommend Interlaken, Switzerland and Tenerife, Spain! Eat plenty of schnitzel!

And email me if you're taking the courses I listed for 2016, and we can provide you with our old notes!

Mit freundlichen Grüßen,

*Melanie
melgrande2@gmail.com*

Braunschweig 21



Our Jet Engines class was right in there!!



HOW TO TRAVEL BY TRAIN IN EUROPE

*because European train systems
are the best thing in the world
and they're so easy and so safe
and so convenient and they're just
great*

Reference: <http://livesharetravel.com/17676/travel-train-europe-voyages-sncf/>

1. Secure the best fares by booking early.
2. When booking French trains, look out for Prem fares. These low-cost fares are limited availability and go on sale 90 days in advance. The sooner you can book, the more chance you have of securing Prem fares.
3. Build enough time into your connections. Voyages-sncf recommends an hour to change stations, and half an hour for platform changes. But allow an additional 30 minutes for Eurostar check-in. *Do NOT cut connections too close!!!*
4. Purchase a pass according to the number of times you plan to travel rather than the duration of your trip. The more services you use, the more cost-effective the pass becomes.

InterRail one-country passes start from £49 and global passes from £233. Passes don't only provide rail savings, but discounts on hotels, museums and other forms of transport.

5. Download the app, or just the train schedules in PDF, to keep yourself on track.
6. Enjoy the lovely views, make friends, relax!

Int'l Travel Ticketing Agency: Voyages-sncf <http://en.voyages-sncf.com/en/>

Deutsche Bahn AG (InterCity Express or CNL)

InterRail

Prem (French)

Eurostar (connecting UK to continental Europe in 30 mins, London to Paris in 2 hrs)

Ski train via Snowcarbon <http://snowcarbon.co.uk/>

Braunschweig 22



Other Transportation:

EuroPass

Can customize your own train pass in terms of how many countries it covers and how long it is valid for, in increments of months or something like 5 days travel in 10 continuous days. For example, the global pass cheapest option (5 in 10 days) costs \$339, whereas a France-Spain pass cheapest option (4 days in 2 mos.) costs \$283. Some students have felt as though it doesn't pay off, however. It is suggested that maybe individual tickets or budget airlines may be cheaper, depending on your travel plans.

<http://www.eurail.com/>

Eurail Pass = Euro tourists
Interrail Pass = Euro residents
You = both!!

Shared Rides

Like Uber but for rides across the country, this is probably the cheapest way to travel.

<https://www.blablacar.com/>

Renting a Car

Traveling within Germany or to a specific city for a short trip? Rent a car with 3 or 4 other friends and just drive! Cars are actually going to be faster than the trains, and with shared costs, cheaper.

Bla Bla Car
Anmelden | Einloggen | Wie es funktioniert [f Like](#) [2.8m](#)

Extrem günstig durch ganz Deutschland und Europa mitfahren!

Sie haben ein Auto?
[Fahr anbieten](#)

Finden Sie Ihre Mitfahrgelegenheit

● Von

● Nach

📅 Datum
Finden

Mitfahren in einer vertrauenswürdigen Community: verifizierte Mitglieder-Profile, Bewertungen

Bewertung für Celine K
 "Pünktlich, sehr angenehm und eine sehr gute Mitfahrerin. Gerne immer wieder."

Bewertung für Emma Z
 "Super nette Mitfahrerin! War pünktlich und freundlich. Gerne wieder."

Bewertung für Christoph G
 "Zuverlässiger Befahrer. Die Zeit bei netten Gesprächen auch ganz schnell vergangen."

Braunschweig 23



Travel Tips: The Travel Backpack

Highly recommended! It's going to be easiest to carry this across cities, between trains, and all over Europe. You might even find a good deal once you're in Germany. Recommended brands: Osprey, Tortuga.

Budget Airlines

- Ryan Air
- Eurowings/ Germanwings: 66€ round trip; you choose the category of places you want to go; may even get cheaper as you narrow down the options?

Other Tips

Don't forget Eastern Europe! It's going to be cheaper, and it's an amazing place to be. Go to Prague, the Croatian beaches, and Poland.

Do not overpack!!!

Plan ahead to get the best deals.

Go to a football game.



Biggest stadium in Germany: Signal Iduna Park, in Dortmund.

Packing List...

outerwear

- winter coat
- leather jacket
- raincoat
- winter hat(s)
- ski mittens
- ski pants
- winter gloves
- scarves
- sweatshirts (2-3)
- jeans (3-4)
- leggings

casual

- long sleeves (3-4)
- t-shirts (4-5)
- tanks (2-3)
- cami tanks (nude, black)
- shorts (2-3)
- casual skirts (2-3)
- casual dresses (2-3)

athletic wear

- workout tanks (2-3)
- workout pants/shorts (3-4)
- bathing suit(s)
- sweatpants (1)
- pajama pants
- pajama shirt
- socks
- underwear

dressy

- business pants (3)
- business tops / polos (5-6)
- fancy dress (1)

shoes

- hiking boots
- combat boots
- running shoes
- casual sneakers

Please note that it will not be warm enough for long enough to justify bringing a lot of summer clothes or cute sandals. You can buy a pair of flip flops and otherwise forget the sandals.

- flats
- heels/ wedges for nights out
- European voltage adaptor
- **miscellaneous** umbrella or poncho
- extra hair bands/ clips
- emergency sewing kit
- travel first aid kit
- pain relievers (optional)
- facewash
- hat(s)
- jewelry
- *Germany Culture Shock!* book
- mini dictionary
- Swiss Army knife (*in your checked bag!!*)
- combination lock (*bring to hostels*)

Carry-On Item

- extra books
 - guide book(s)
 - camera + charger
 - Folder of Important Documents!
 - Copy of Passport (maybe even 2 copies)
 - Copy of ID
 - Copy of Birth Cert.
 - Letter of Acceptance from Host Univ.
 - Medical Records / Important Prescriptions (if necessary)
 - Proof of Insurance
 - extra cash
- *It's good to split up where you keep your money. Oma always said, never keep all your ducks in one basket!*
- razors
 - moisturizer (face + body)
 - hairbrush + comb
 - makeup
 - prescriptions

Personal Item

- flight plan/boarding pass
- wallet + cash!
- Driver's License/ ID
- passport
- laptop + charger
- book
- nook + charger
- phone charger!!
- snacks
- refillable water bottle (empty)
- sunglasses
- journal
- pens/ pencils/ highlighters/ etc.
- headphones
- hand sanitizer

Pinterest Packing Tips...

Travel Light...



PACKING ESSENTIALS

the tools you need to make everything fit

1. **PACKING CUBE**
fit two cubes side by side on left side, under purses



3. **SHOE BAGS**
Cover your shoes with shoe bags to protect your clothes



2. **CLEAR ZIP POUCH**
use this pouch for your toiletries and makeup



4. **PACKING ENVELOPE**
place on the right side of the suitcase

What to Pack for Study Abroad
<http://studyabroadtips09.blogspot.com/2009/02/what-to-pack-for-semester-abroad.html>

LAYERS, LAYERS, LAYERS

Leave your nicer things at home. What if they get lost or stolen?

Rule of thumb:
2-3 tops per bottom

Fit 30 Outfits in Your Carry-On
http://www.stylebookapp.com/stories/tripical_packing.html



travel light

with *Henkaa*

pack this for a european vacation:



Miscellaneous To-Do Tips Before Leaving...

- Find out how much cash you're going to need... Public transport the first few days? Deposit on apartment? Residency permit fees? *You'll have to withdraw that from an ATM OR bring that cash (and trade it in for euros at the airport) if you can't use a credit/debit card for these!*
- Tell family & friends about WhatsApp (or other means of communication).
- Contact the Purdue Financial Aid office to make sure your scholarships transfer. *And the office is closed Dec. 24th through Jan. 4th.*
- Tell your credit card company and bank that you're going abroad so they don't freeze your account.
- Call your insurance company AND doctor's office for a bulk prescription *well in advance* (if necessary).
- If you set up an international phone plan with your American provider, that needs to be initiated (easily via phone) *immediately before you leave.*

Germans oddly care a lot about walk signs. You'll see even angsty teenagers not crossing the road, even with zero cars around, if the sign says "Don't walk".



Miscellaneous Tips While You're There...

- Always bring your student card everywhere! So many discounts!
 - FREE train from Hannover HAJ airport to TUB!!
- It's easy to find local "fast food" bakeries, *Kamps*, or *Terbuyken*— or a pizzeria!
 - Try the Döner!!! It's like a gyro, with lamb/ beef/ chicken. But more amazing.
- Look for clubs & organizations to join— gut for the résumé!
- Get a bike?
- Meals can make or break your budget...
 - Use grocery store, even on the go! During a trip with friends, you can assign everyone a certain thing (bread, meat, cheese, drink, etc.).
 - Switch nights with other apartments to cook dinner.
- Being touristy: Try to learn what the locals do/ don't like.
 - Example: The "love locks" in Paris are hated by locals— basically graffiti, and part of the bridge actually fell off!
- Know jaywalking policies in your area! Follow traffic signals even if cars aren't around.
- *Before leaving:* Thank the study abroad/ international office there (email), and remind them nicely to *send your transcripts!!*
- *Before leaving:* Settle all bank accounts!!
 - Know if you owe money to the insurance company, and close that account.
 - Know if you need to go get your Studentenwerk dorm deposit, and if you need to convince them to not send it to you 8 weeks later.

THE PURPOSE OF LIFE, AFTER ALL,
IS TO LIVE IT, TO TASTE
EXPERIENCE TO THE UTMOST,
TO REACH OUT EAGERLY AND
WITHOUT FEAR FOR NEWER AND
RICHER EXPERIENCES.

More Questions?

Look on the new GEARE website
and use their forum.

<http://geareguide.weebly.com/>

OR

TUB International Students' Network
on Facebook

<https://www.facebook.com/groups/isnbs2016/>